

2024 - 2025

ANNUAL REPORT



GUELPH TOOL LIBRARY

LENDING IS THE NEW SPENDING

Table of CONTENTS

1. Directors Note
2. The Big Move
3. Our Board of Directors
4. Our Staff
5. Membership and Borrowing Statistics
6. Most Popular Items
7. Financials -Statement of Financial Position
8. Financials - Statement of Revenue and Expenditures
9. Our Volunteers
10. Our Volunteers - Part Two
11. Events and Festivals
12. Events and Festivals - Part Two
13. Our Programs - Part One
14. Our Programs - Part Two
15. Our Programs - Part Three
16. Our Programs - Part Four
17. Sponsors and Donors



Message from the Director

As we look back on this past year at the Guelph Tool Library, I am filled with gratitude and pride for what we've accomplished together. It has been a year of growth, collaboration, and community impact.

Our move to a new location has been truly transformative. The expanded space has allowed us to grow our inventory, create a dedicated classroom for workshops and learning opportunities, and establish a permanent home for FreeHub, our community bike repair program. These additions have strengthened our mission of sharing skills and resources while reducing waste.

We are deeply thankful for the support of our partners. Through a Community Benefits Agreement with the City of Guelph, we were able to hire a Community Outreach Manager who helped us deliver new and engaging programs across the city. In addition, a Job Creation Grant from the Province of Ontario enabled us to bring on a Volunteer Coordinator. This allowed us to extend our hours, welcome more members, and train a dedicated team of tool librarians.

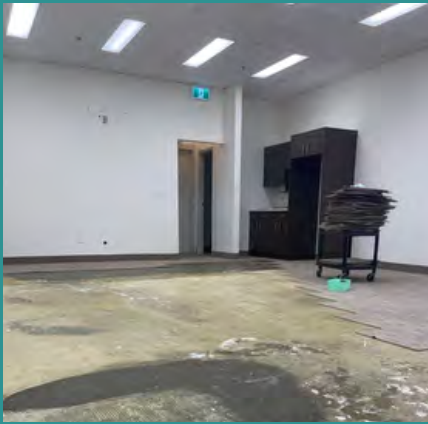
Our volunteers continue to be the heart of our organization. Their time, talent, and energy have sustained and grown our key initiatives, including the Guelph Seed Library, Circular Computer Project, Repair Café Guelph, GROW Community Garden, and Trove.

Thank you to all our members, partners, and volunteers, who contributed to this remarkable year. Together, we are building a stronger, more sustainable, and more connected Guelph.

John Dennis
Director
Guelph Tool Library



OUR BIG MOVE (DOWN THE HALL)





Claire Cowan
Chair



Saba Saneinejad
Secretary



Lauren Jamieson
Treasurer



Jamey Rosen
Member at Large



Rob Lee
Member at Large



Sam Casey
Member at Large



Rodney Atta-Konadu
Member at Large



Susan Carey
Member at Large



Omorowa Eguakun
Member at Large



Jamie Ford
Member at Large

OUR BOARD OF DIRECTORS

OUR STAFF AND COORDINATORS



Steph Clarke
Community
Engagement Manager



Jennica Grimshaw
Community Outreach
Assistant



Leah Kunau-
Catherwood
ReBoot and Repair
Team Coordinator



Kim Logue
Bookkeeper and Living
Better on Less
Coordinator

Special Thanks:

Brian Bauman - Inventory Manager

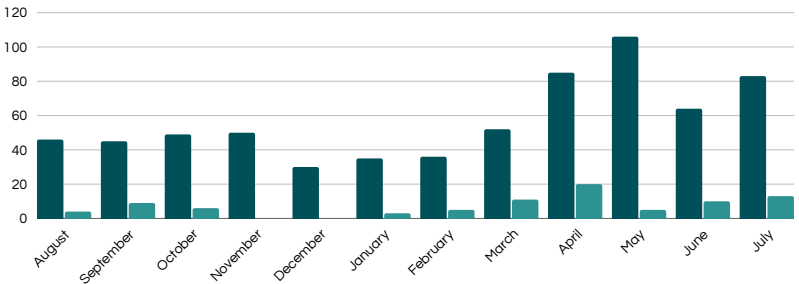
Briar Ford - Inventory Assistant

Hilary Stead - Seed Library Coordinator

MEMBERSHIP AND BORROWING STATISTICS

Our members are the heart of what we do, and this year we experienced growth that demonstrates the impact we have on our community. While we experienced a brief lull during a funding shortfall, we completed our fiscal year with 805 members.

The Guelph Tool Library aims to provide at least 10% of its memberships at no cost, through both our free volunteer membership program, and our Lend-A-Wing program which allows members to pay a higher price and subsidize a membership for someone facing financial barriers.



LENDING IS THE NEW SPENDING

Usage of the Guelph Tool Library was at an all-time high this year, with members borrowing more items and utilizing more than over 94% of our inventory.



Unique Items borrowed

1366

Total number of loans

10,861

MOST POPULAR ITEMS

Cordless Lawn Mower
42 borrows



Folding Tables
Avg 30 borrows per item

Folding Chairs
Avg 30 borrows per item



Cricut Joy
39 borrows



Cotton Candy Machine
30 borrows



7 1/4" Mitre Saw
31 borrows



Other Popular Items:



FINANCIAL STATEMENTS

Guelph Tool Library
Statement of Financial Position
As at July 31, 2025

	July 31, 2025	July 31, 2024
Assets		
Current		
Cash	\$ 42,740	\$ 24,743
Short term investments(Notes 3)	3,000	-
Accounts receivable(Notes 4)	5,470	7,658
Harmonized Sales Tax receivable	3,353	1,306
Prepaid expenses	3,273	2,373
	57,836	36,080
Machinery and equipment, net of accumulated amortization(Notes 5)	1,079	1,438
	\$ 58,915	\$ 37,518
Liabilities		
Current		
Accounts payable and accrued liabilities	\$ 10,595	\$ 21,000
Government remittances payable	3,195	1,740
Deferred grant revenue(Notes 6)	57,640	22,464
	71,430	45,204
Net Deficiency		
Accumulated deficit	(12,515)	(7,686)
	\$ 58,915	\$ 37,518

FINANCIAL STATEMENTS

Guelph Tool Library Statement of Revenue and Expenditures and Net Assets(Deficit)

For the year ended July 31, 2025

	July 31, 2025	July 31, 2024
Revenue		
Grants	\$ 74,802	\$ 167,022
Membership fees	47,449	42,788
Donations, fundraising and sponsorships	36,688	40,535
Circular store revenue	-	30,060
Other income	10,249	5,797
	169,188	286,202
Expenditures		
Wages and benefits	70,367	169,452
Rent and utilities	38,997	45,645
Program	26,854	43,047
Administration	20,785	35,633
Professional fees	7,000	7,000
Moving costs	6,612	-
Fundraising and promotion	3,042	2,225
Amortization	360	360
	174,017	303,362
Excess of expenditures over revenue for the year	(4,829)	(17,160)
Net assets (deficit), beginning of year	(7,686)	9,474
Net deficit, end of year	\$ (12,515)	\$ (7,686)

Meet OUR VOLUNTEERS

Librarians

Sarah Bayliss

Claire Cowan

Emily Data

Falcon Durrer

Mariya Elson

Angie Ferreira

Jamie Ford

Betty Foster

Raven Griffin

Rae Healy

Frebis Hoffmeyer

Brittany Lee

Robert Maier

Keith Makse

Annette Marbella

Dave Markwick

Giancarlo Martini

Colin McMillan

Chrissy Mounir

Amanda Raymakers

Robertson Reid

Naincy Sharma

Rory Sutherland

Tricia Taylor

Steven Tebby

Mike Toombs

Alekya Vadupu

Illyria Volcansek

Anne Waller

Jackie Williams

David Widjaja

Regan Zink

Freehub

Aaron Root

Adam Zgraja

Andrew Bruce

Arash

Connor Chato

Emily Aimola

Emily Aimola

Giancarlo Martini

Greg Hines

Gregorio Muraca

Johnny Lepage

Mark Sullivan

Matt Manassis

Mike Von Dehn

Peter Buza

Rob Reid

Robin Bresnahan

Travis Fantina

Trevor Haskett

Wally Carter

Circular Computer Project

Arash Yoosefdoost

Derek Schweitzer

Geof Kearns

John Dennis

Keith Dunn

Mike Caldwell

Randy Lin

Grow Garden

Caroline Prochazka

Danielle Ludwick

Eddy Poisson

Emmett Renaud

Gary Goodman

Grace Poisson

Jane McDonald

Kelly Ward

Larissa Klee

Louise Watson

Moira Smee

Quin Shirk-Luckett

Rana Telfah

Ruth Slavin

Sandor Katai

Susan Knapp

Thi Ta

Yvonne Day

Zachary Mitchell

Repair Cafe

Angie Ferreira

Arash Yoosefdoost

Barbara Frueler

Barbara Kephart

Becky Swaison

Brian Pickles

Chris Lynar

Erick Girouard

Fron Reilly

Jackie Williams

Jamie Ford

Jill Gill

Julianna Van Adrichem

Keith Makse

Larissa Klee

Lauren Jamison

Lisa Conroy

Lloyd Longfield

Michele Collins

Mike Hayward

Mike Nagy

Patrick B Fitzgerald

Paul Hoggarth

Randy Lin

Rick Mazur

Rick Simmons

Sandra Remigis

Steve Wilson

Terri Sider

Tim Catherwood

Tim Heyland

Tim Wisniewski

Trove

Cara Wilen

Susan Carey

Living Better On Less

Alan Cook

Ann Chidwick

John Dennis

Kim Logue

Omorowa Eguakun

Sam Casey

Susan Carey

Guelph Seed Library

Amie Ouillette

Beverley Buckie

Catherine Reilly

Goldie Sherman

Hilary Stead

Jill McCracken

Madilyn Girardin

Marcella Corroeli Jager

Megan Prieur

Olutobi Oluwole

Sue McCook

Susan Carey

Wednesday Fixers

Brian Bauman

Dean Furzecott

Ed Cazzola

Emily Data

Emory Davis

John Dennis

Katy Wang

Keith Makse

Steve Wilson

Tim Catherwood

Tim Wisniewski

Stitch Together

Alex Turgeon

Anya Bungay

Becky Swainson

Beverly Green

Brenda Doner

Catherine Shearer-

Kudel

Gail Burgis

Gwen Hopkins

Jen Ottenhof

Jenn Rosen

Michelle Clarke

Katelyn Evans

Lexi Marcaccio

Pat Bowley

Sandy Remigis

Shelby Law

EVENTS AND FESTIVALS

Circular Economy Month

In October 2024, we teamed up with the City of Guelph and other collaborators to offer a month of programs and events, kicking off with a Repair Cafe, Open House at the Waste Resource Innovation Centre, and a pop-up Stitch Together session at the Guelph Public library, all on October 5th. The rest of October was filled with a compost workshop, a screening of the film Landfill Harmonic, a sewing machine repair workshop, and an open house during the eMerge Eco Market.



Seedy Saturday

In March of 2025, our Seedy Saturday crew joined forces with Yorklands Green Hub to create a more robust event with programming, vendors, and community organizations. Over one thousand attendees swapped more than 3,000 packets of seeds. The Guelph Tool Library hosted a garden tool swap, native plant education, and a pop-up from Trove, a Loose Parts Project.

EVENTS AND FESTIVALS



Free To Read Book Sale

The Free to Read Book Sale took place on Saturday April 26, 2025 from 10 am until 3 pm. This was the third year of the sale, which supports literacy programs in local jails. Timed to celebrate World Book Day, the Free to Read Book Sale took place in the main concourse of the Old Quebec Street Shoppes and featured over 7500 books for sale. We sold 3300 books and gave away 1800 books to the Books for Inmates Program and the Children's Reading Room. The remainder of the collection was donated to other book sales in the area.

Skill Share Fair

In celebration of our move to a larger location within Old Quebec Street, we hosted the Skill Share Fair at our grand opening, where people learned skills like watercolour, leather working, paper making, bike repair, zine making, and basket weaving. We capped off the night with a delicious dinner and a silent dance party



Our PROGRAMS



Freehub Community Bike Centre

The Freehub Community Bike Centre is our do-it-yourself, volunteer-run. All are welcome to access a repair stand, specialized bike tools, common replacement parts, and assistance from our volunteer mechanics. 20 volunteers logged 650 hours on the project this year across regular shop hours, pop-ups, and programs.

600 people visited Freehub hours at the GTL. We cohosted 15 free bike repair events with 10 different community organizations. Volunteer mechanics prepared and adopted out 39 bikes, plus 50 more at the ReCycle event with the City of Guelph. Freehub is supported by donations, and also received \$2000 in funding from the City of Guelph Active Transportation Department.



Repair Cafe

This year, Repair Café Guelph hosted 6 events, in which volunteer “fixers” help visitors fix their broken items and learn new skills in the process. The aim is to build a more sustainable society and counter the throwaway mindset. 27 volunteers logged 450 hours working on 270 items, repairing 189 of them - a 70% success rate!

The Repair Café is supported by the City of Guelph. We were able to host events throughout Guelph at the U of G and Three Willows United Church. Repairs are provided free of charge, with donations encouraged to offset programming costs.

Living Better On Less

In the fall of 2024, Living Better On Less hosted a 6 week session geared towards seniors, in collaboration with the Guelph Wellington Seniors Association and held at the Evergreen Seniors Centre, supported by the New Horizons for Seniors Program by the Government of Canada.

Additionally, the series was offered virtually, allowing it to expand outside of Guelph and reach new audiences. In summer 2025, an additional NHSP grant allowed the program to be offered in Erin. LBOL is supported by the Helper Bees at the Church of the Apostles.



Stitch Together

The Stitch Together Community Mending Project offers free, drop-in, DIY mending sessions open to all community members. We provide sewing supplies, tools (including sewing machines), and friendly know-how to help people mend their textiles and reduce waste in our community. In 23 sessions, we welcomed 123 program visitors, and supported participants in mending over 124 items. We also held our second Mend In Public Day, in collaboration with the Guelph Public Library.



Trove

Established in early 2025, Trove: A Loose Parts Project, aims to collect all of the bits and bobs we can't dare throw away, and curate them in to a collection of resources for early childhood educators to use in open-ended play.



Wednesday Night Fixers

Wednesday Night Fixers is a Program that falls under our Repair Café initiative. A crew of volunteer fixers comes in after hours to do repairs on the GTL inventory items that have been damaged, as well as items that belong to GTL members and Repair Café users on a case-by-case basis. 8 volunteers worked for 250 hours on 85 items with a 95% repair rate, helping keep 200kg out of landfill



Circular Computer Project

The Circular Computer Project promotes digital equity by refurbishing and redistributing used laptops to those in need, supporting the GW Digital Equity Coalition. This year, we received donations of 99 laptops and tablets during the fiscal year.

75 of these devices were upgraded and redistributed to the community. With an average value of \$200 per device, this represents a value of approximately \$15,000.

Devices went to the Guelph Community Health Centre, Women in Crisis Shelter, Chalmer's Community Service Centre, Rachel's Saturday Table, and the Canadian Mental Health Association Waterloo Wellington.





Guelph Seed Library

The Guelph Seed Library is a sharing hub of seeds. Seeds are available free to community members. Members are encouraged to grow the items, including produce and flowers, and then save some seeds to return to the library. The GSL supports this by providing info sessions on seed starting, seed saving, and how to have a successful urban garden.

The GSL distributed over 18000 packets of seeds this year, more than double that of previous seasons. Seeds were distributed through online seed requests, events like Seedy Saturday, and through a collaboration with the Guelph Public Library that allowed us to distribute seeds in three satellite branches. The project helped encourage local food security and skills building. An entirely volunteer run project, the GSL relies on donations and countless hours from dedicated coordinators who label, package, and distribute seeds.



GROW Community Garden

The GROW Garden is a stepping stone for self-sufficiency with an emphasis on community building. We aim to increase food security through teaching and learning to grow produce together, and the donation of healthy produce.

The garden donated approximately 200KG in fresh produce to local organizations from donation plots and surplus from the 14 volunteer gardeners. Volunteers logged over 80 hours of planning, planting, and delivering donations all while maintaining tidy plots at Grace Community Church.



RCT 
Renewed Computer Technology



2ND CHANCE 
Employment Counselling (Wellington) Inc.

Rotary
Club of Guelph Trillium



gwsa
Guelph Wellington
Seniors Association
Be active Get involved Make friends



Guelph Public Library
Explore • Connect • Thrive

OPIRG **GUELPH**
FOR ENVIRONMENTAL & SOCIAL JUSTICE



CITY OF
Guelph

Canada 

Ontario
Trillium
Foundation



Fondation
Trillium
de l'Ontario

An agency of the Government of Ontario
Un organisme du gouvernement de l'Ontario

Meet OUR SPONSORS AND SUPPORTERS

And
members
like you!